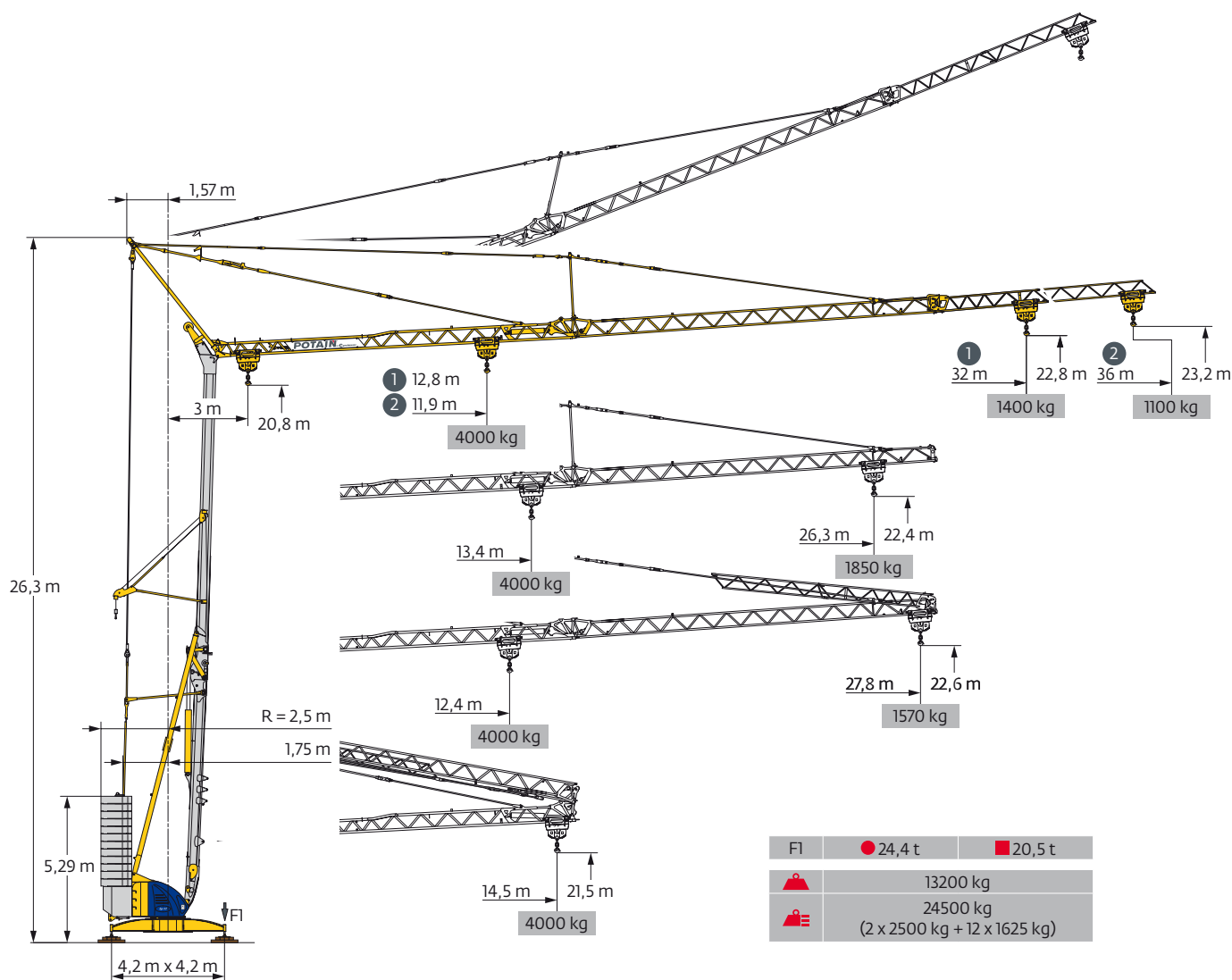
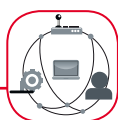


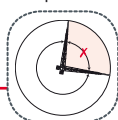
Potain Igo 42



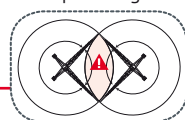
SmartCom



Top Zone

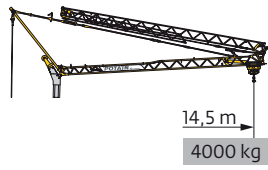


Top Tracing II

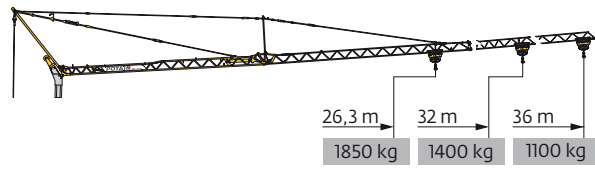


EN 14439 C25-D25
EN 14439 C50-D50
FEM 1.001-A3

Courbes de charges / Lastkurven / Load curves / Curvas de cargas / Curve di carico
 Curvas de carga / Кривые нагрузок



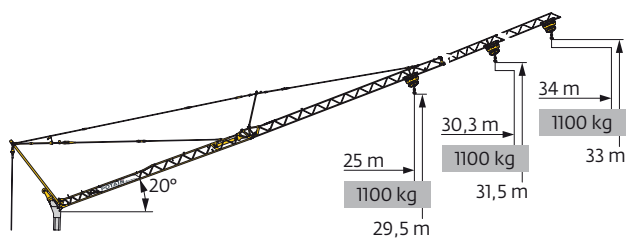
36 m	3	▶	14,5	m
▲▲▲	■		4000	kg
			2000	kg
			2000	kg
32 m	3	▶	14,5	m
▲▲▲	■		4000	kg
			2000	kg
			2000	kg
26,3	3	▶	14,5	m
▲▲▲	■		4000	kg
			2000	kg
			2000	kg



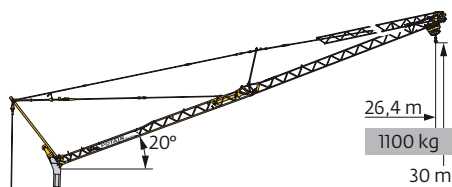
3	▶	11,9	12	14	16	18	20	20,8	21,8	22	24	26	28	30	32	34	36	m
		4000	3950	3255	2760	2385	2095	2000	1885	1860	1670	1515	1380	1265	1165	1080	1000	kg
								2000	1885	1860	1670	1515	1380	1265	1165	1080	1000	kg
									2000	1975	1780	1620	1485	1370	1265	1180	1100	kg
3	▶		12,8	14	16	18	20	22	22,6	23,6	24	26	28	30	32			m
			4000	3595	3050	2640	2320	2065	2000	1895	1855	1685	1535	1410	1300			kg
									2000	1895	1855	1685	1535	1410	1300			kg
										2000	1965	1790	1640	1510	1400			kg
3	▶		13,4	14	16	18	20	22	23,6	24	24,6	26,3						m
			4000	3780	3210	2780	2445	2180	2000	1930	1900	1750						kg
									2000	1930	1900	1750						kg
										2000	1850							kg



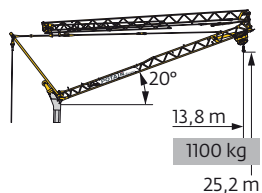
36 m	3	▶	12,4	14	16	18	20	21,7	22	22,6	24	26	27,8	m
▲▲▲	■		4000	3425	2900	2510	2210	1995	1965	1900	1765	1600	1470	kg
								2000	1965	1900	1765	1600	1470	kg
									2000	1865	1700	1570	kg	



36 m	3	▶											34	m
▲▲▲	■												1000	kg
													1100	kg
32 m	3	▶											30,3	m
▲▲▲	■												1000	kg
													1100	kg
26,3 m	3	▶								25				m
▲▲▲	■									1000				kg
										1100				kg



36 m	3	▶										26,4	m
▲▲▲	■											1000	kg
												1100	kg



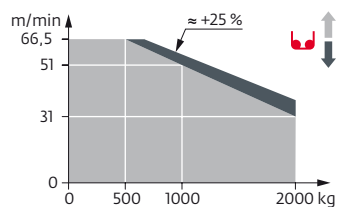
36 m	3	▶										13,8	m
▲▲▲	■											1000	kg
												1100	kg

Mécanismes / Triebwerke / Mechanisms / Mecanismos / Meccanismi
 Mecanismos / Механизмы

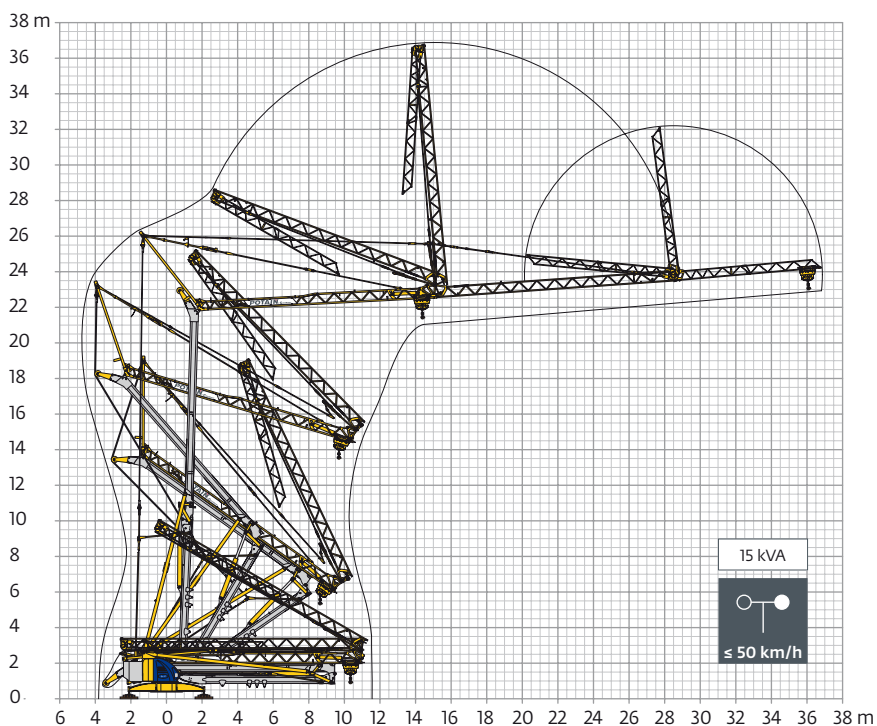
400 V - 50 Hz 480 V - 60 Hz													ch - PS hp	kW
	15 LVF 10 Optima	m/min	3,6	18	31	51	66,5	1,8	9	15,5	25,5	33	15	11
		kg	2000	2000	2000	1000	500	4000	4000	4000	2000	1000		
	3 DVF 5	m/min	15 - 30 - 45 (0 → 1000 kg) 15 - 30 - 41 (1000 → 4000 kg)									3	2,2	
	RVF 41 Optima+	tr/min U/min rpm	0 → 0,8									2	3	

	IEC 60204-32		kVA
	400 V (+10% -10%) 50 Hz / 480 V (+6% -10%) 60 Hz		15 kVA

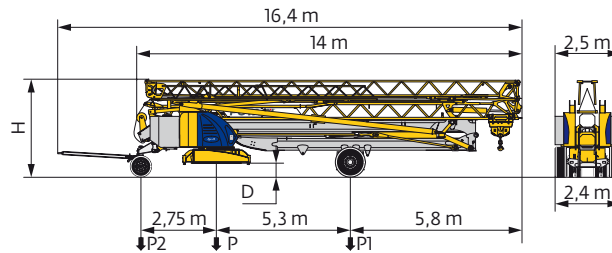
15 LVF 10 Optima



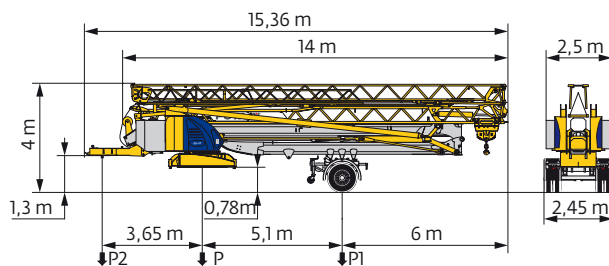
Montage / Montage / Erection / Montaje / Montaggio
 Montagem / Монтаж



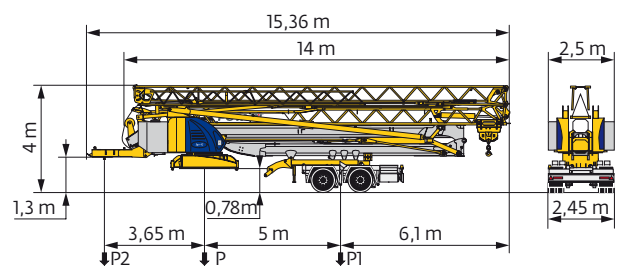
Transport / Transport / Transport / Transporte / Trasporto
Transporte / Транспортировка



	km/h	D (m)	H (m)	P (kg)	P1 (kg)	P2 (kg)
DJ100/S120	10	0,36/0,21	3,52/3,37	20010	10605	9405
DJ105/S125	25	0,36/0,21	3,52/3,37	20300	10815	9485
..... /..... i						



	km/h	P (kg)	P1 (kg)	P2 (kg)
SL121/J135	25	21060	12790	8270
..... /..... i				



	km/h	P (kg)	P1 (kg)	P2 (kg)
SL122/J215M	80	21980	14100	7880

FR

- R** Rayon de giration
- i** Nous consulter
- Réactions en service
- Réactions hors service
- ▲ Poids à vide, sans lest, sans trains de transport, avec flèche maxi. et hauteur standard.
- ▲ Poids total du lest
- Équipements standards
- Équipements optionnels
- Levage
- Distribution
- Orientation
- Puissance requise

DE

- Schwenk radius
- Auf Anfrage
- Reaktionskräfte in Betrieb
- Reaktionskräfte außer Betrieb
- Gewicht ohne Last, ohne Ballast, ohne Transportachsen mit max. Auslager und Standardhöhe
- Ballast-Gesamtgewicht
- Standardausrüstungen
- Sonderausrüstungen
- Heben
- Katzfahren
- Schwenken
- Erforderliche Leistung

EN

- Rear slewing radius
- Consult us
- Reactions in service
- Reactions out of service
- Weight without load, without ballast, without transport axes, with max. jib and standard height
- Total ballast weight
- Standard equipment
- Options
- Hoisting
- Trolleying
- Slewing
- Required power

ES

- Radio de giro
- Consultarnos
- Reacciones en servicio
- Reacciones fuera de servicio
- Peso en vacío, sin lastre, sin trenes de transporte con flecha y altura estándar
- Peso total del lastre
- Equipamiento de serie
- Equipamiento opcional
- Elevación
- Distribución
- Orientación
- Potencia Necesaria

IT

- Raggio di rotazione
- Consultateci
- Reazioni in servizio
- Reazioni fuori servizio
- Peso a vuoto, senza zavorra, senza assali di trasporto, con braccio max e altezza standard.
- Peso totale della zavorra
- Equipaggiamento standard
- Equipaggiamento in opzione
- Sollevamento
- Distribuzione
- Rotazione
- Potenza richiesta

PT

- Raio de rotação
- Consultar-nos
- Reacções em serviço
- Reacções fora de serviço
- Peso em vazio, sem lastro, sem eixos de transporte com lança máxima e altura standard.
- Peso total do lastro
- Equipamento de série
- Equipamento opcional
- Elevação
- Distribuição
- Rotação
- Potência Necessária

RU

- Задний габарит
- Проконсультируйтесь у нас
- Реакция при работе
- Реакция в покое
- Вес без груза, без балласта, без осей для транспортировки, с максимальным вылетом стрелы и стандартной высотой
- Общий вес балласта
- Стандартное оборудование
- Дополнительное оборудование (опция)
- Подъем
- Перемещение по стреле
- Поворот
- Потребляемая мощность

! Document commercial non contractuel. Pour toute information technique se référer à la notice correspondante. Unverbindliches Vertriebsdokument. Für technische Informationen, siehe die entsprechenden Anweisungen. This commercial document is not legally binding. For any technical information, please refer to the corresponding instructions. Documento comercial no contractual. Para cualquier información técnica, ver la noticia correspondiente. Documento commerciale non vincolante, per tutte le informazioni tecniche fare riferimento al catalogo istruzioni. Documento comercial não contratual. Para qualquer informação técnica complementar consultar as respectivas instruções. Этот коммерческий документ не является юридически обязательным. Для получения технической информации, см. соответствующие инструкции.



www.manitowoc.com

Americas
Manitowoc, Wisconsin, USA
Tel: +1 920 684 6621
Fax: +1 920 683 6277

Shady Grove, Pennsylvania, USA
Tel: +1 717 597 8121
Fax: +1 717 597 4062

Europe, Middle East, Africa
Ecully, France
Tel: +33 (0)4 72 18 20 20
Fax: +33 (0)4 72 18 20 00

China
Shanghai, China
Tel: +86 21 6457 0066
Fax: +86 21 6457 4955

Greater Asia-Pacific
Singapore
Tel: +65 6264 1188
Fax: +65 6862 4040